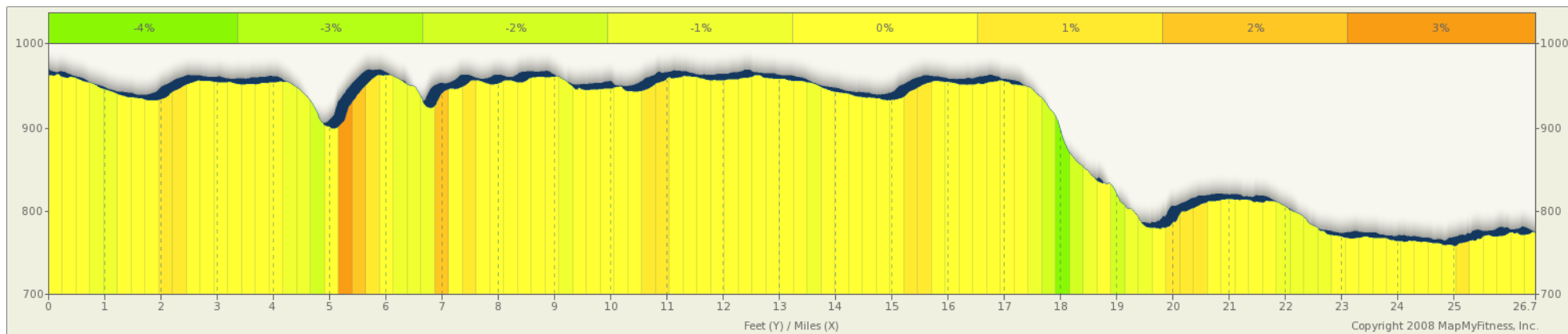
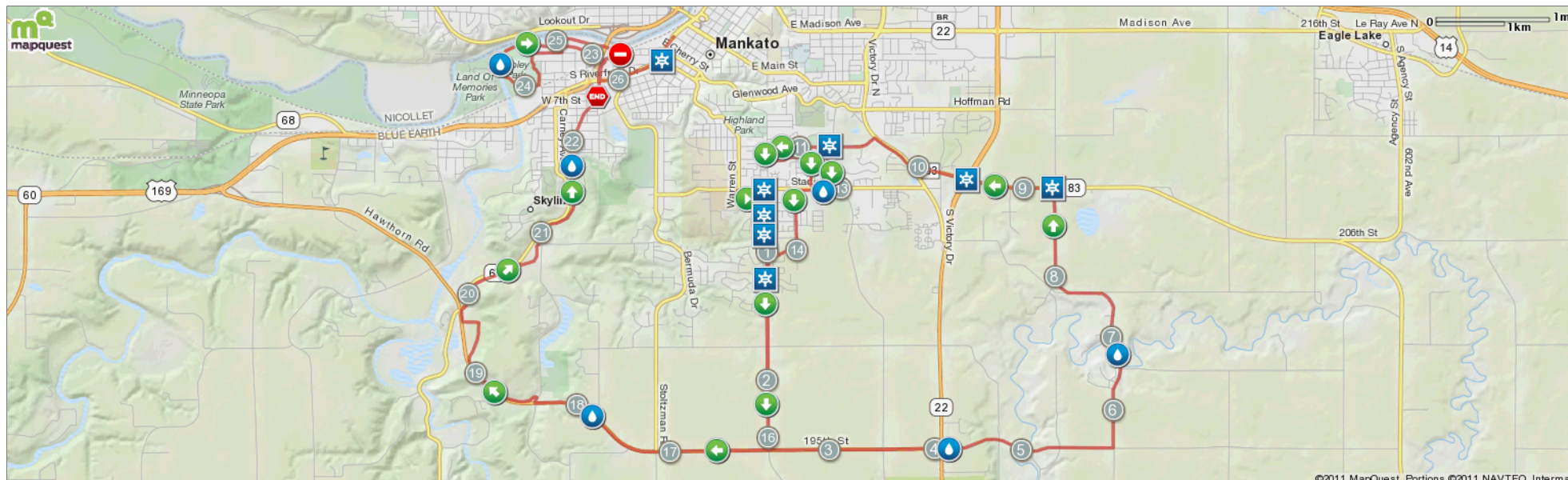


Mankato Marathon

Starts In Mankato, Minnesota

26.64 miles



Description

Mankato Marathon

Starts In Mankato, Minnesota

Notes		
AT	FOR	NOTES
		Police
		Police
		Police
		South on Monks easst sidewalk
		Police
		Police
		Police
		Police
		South on Monks Ave toward 195th
		East on Cty 90 in far north lane of road
		Police
		Police
		Water
		North on 589th on East side of roadway
		Water

Notes		
AT	FOR	NOTES
		Continuing North on 589th on east side of road towards Victory Drive S. (county 83) and crossing intersection to north side of Victory. Head west
		Water
		Police
		Continuing west on Victory Drive (county 83)
		Continuing west on Victory Drive (county 83)
		Police
		Police
		Police
		Police
		West on Balcerzak on south sidewalk toward Monks Ave
		East on Homestead towards Lion's park. Use south side of road going with traffic

Notes		
AT	FOR	NOTES
		South on trail following trail/ path around the lake. Follow the trail closest to lake until trail pops out into neighborhood on Sandpiper Drive (cul- de- sac)
		Water
		North on Sandpiper to homestead Rd...go right on Homestead then an immediate right on Pohl Rd.
		Police
		Police
		South on Pohl to Stadium and go west
		South on Pohl to Stadium and go west
		Water
		Police
		West on Stadium running on the south side to Heron Drive Southbound

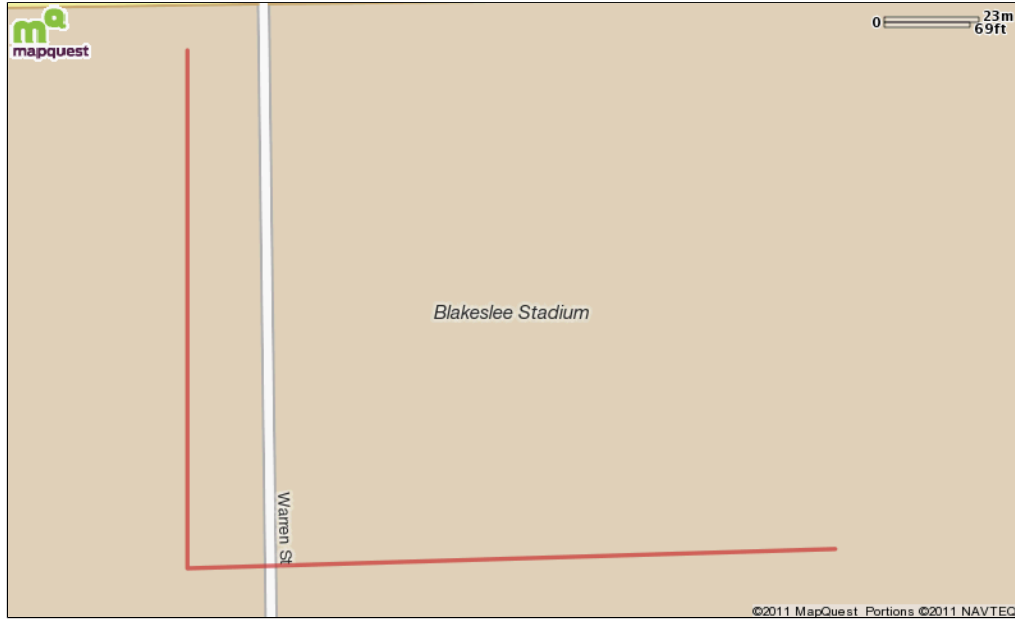
Mankato Marathon

Starts In Mankato, Minnesota

Notes		
AT	FOR	NOTES
		South on Heron running on east side of road toward Timberwolf rd. (at Rosa Parks elementary school) runners stay on south side of residential road when on Timberwolf.
		West on Timberwolf staying south on residential street. Run to Monks and stay east when taking a left on Monk
		Water
		South on Monks toward 195th
		Marathoners run west on the north shoulder of County Rd 90
		Water
		Northwest on Red Jacket Trail
		Water
		Northeast on Red Jacket Trail
		Northeast on Red Jacket Trail

Notes		
AT	FOR	NOTES
		North on Red Jacket Trail
		Water
		North on Red Jacket Trail toward Riverfront Drive. Crossing over Riverfront staying on west side of road via sidewalk. Follow to train trussel in which you will go to the last tunnel and go left under bridge continuing to Mound Ave.
		Police
		Water
		East on railway heading towards the river. Trail will make a fork
		East on trail along the river. Trail will soon head south back toward the train trussel you entered the neighborhood through. You will continue on trail to second trussel inlet and out of neighborhood back on the Red Jacket trail following Poplar. Two way traffic here on trail. Use caution

Notes		
AT	FOR	NOTES
		Road Closed for traffic
		Road Closed
		Water
		Police
		Police
		Road Closed from Stolzman Road to Poplar Street
		Road Closed for traffic from Poplar Street to Stoltzman Road
		Police
		Police
		Runners come towards the finish on the east two lanes of Riverfront Drive



© MapMyFitness, LLC. All Rights Reserved, 2005-2008 | View more maps online at:
 Find this route online at mapmyrun.com/routes/view/13512364
 Distance values on this map may differ slightly from values reported on the route engine.

Notes		
AT	FOR	NOTES
		No notes available, please create your routes with automatic notes enabled, or manually create notes when editing your route to see notes here!
This segment shows 0.1 mi. (511 ft.) of your route.		

Notes		
AT	FOR	NOTES
		Police
		Police
This segment shows 0.18 mi. (963 ft.) of your route.		

Notes		
AT	FOR	NOTES
		No notes available, please create your routes with automatic notes enabled, or manually create notes when editing your route to see notes here!
This segment shows 0.43 mi. (2,272 ft.) of your route.		

